

EnertraxDL - DAS Download Client

User Manual

Date Aug 30, 2004

Copyright Information

Copyright © 2004, Obvius Holdings, LLC. All rights reserved.

Redistribution and use in source and binary forms, with or without modification, are permitted provided that the following conditions are met:

1. Redistributions of source code must retain the above copyright notice, this list of conditions and the following disclaimer.
2. Redistributions in binary form must reproduce the above copyright notice, this list of conditions and the following disclaimer in the documentation and/or other materials provided with the distribution.
3. Neither the name of Obvius Holdings nor the names of its contributors may be used to endorse or promote products derived from this software without specific prior written permission.

THIS SOFTWARE PROGRAM IS PROVIDED BY OBVIUS HOLDINGS AND CONTRIBUTORS FREE OF CHARGE AND ACCORDINGLY IS LICENSED "AS IS" WITHOUT WARRANTY OF ANY KIND, AND ANY EXPRESS OR IMPLIED WARRANTIES, INCLUDING, BUT NOT LIMITED TO, THE IMPLIED WARRANTIES OF MERCHANTABILITY AND FITNESS FOR A PARTICULAR PURPOSE, ARE DISCLAIMED. THE ENTIRE RISK AS TO THE QUALITY AND THE PERFORMANCE OF THE PROGRAM IS WITH YOU.

IN NO EVENT, UNLESS REQUIRED BY APPLICABLE LAW OR AGREED TO IN WRITING, SHALL OBVIUS HOLDINGS OR CONTRIBUTORS WHO MAY MODIFY AND/OR REDISTRIBUTE THE PROGRAM BE LIABLE FOR ANY DIRECT, INDIRECT, INCIDENTAL, GENERAL, SPECIAL, EXEMPLARY, PUNITIVE, OR CONSEQUENTIAL DAMAGES (INCLUDING, BUT NOT LIMITED TO, PROCUREMENT OF SUBSTITUTE GOODS OR SERVICES; LOSS OF USE, LOSS OF DATA, DATA BEING RENDERED INACCURATE OR FAILURE OF THE PROGRAM TO RUN WITH ANY OTHER PROGRAMS, OR LOST PROFITS; OR BUSINESS INTERRUPTION) HOWEVER CAUSED AND ON ANY THEORY OF LIABILITY, WHETHER IN CONTRACT, STRICT LIABILITY, OR TORT (INCLUDING NEGLIGENCE OR OTHERWISE) ARISING IN ANY WAY OUT OF THE USE OF THIS SOFTWARE PROGRAM, EVEN IF SUCH HOLDER OR OTHER PARTY HAS BEEN ADVISED OF THE POSSIBILITY OF SUCH DAMAGES.

Product Application Limitation

Obvius products are not intended for use in critical applications such as nuclear facilities, human implantable devices or life support. Obvius is not liable, in whole or in part, for any claims or damages arising from such uses.

Obvius strongly believes in continuous improvement, therefore we must reserve the right to change specifications and product offerings without notice. Where possible, we will substitute products with equivalent functionality when necessary.

Table of Contents

Overview.....	4
Installation.....	4
Software Operation.....	4
DAS List Overview.....	5
Edit DAS Settings:.....	5
Downloading Data.....	6
Modem issues.....	6
Automating Downloads.....	6
Configuration Files.....	6
EnertraxDL Configuration Files.....	6
DAS Configuration Files.....	7
EnertraxDL Source Code.....	7

Overview

The EnertraxDL is a DAS Download Client software tool for downloading log file data from one or more DAS units such as the Obvius AcquiSuite A8811 or AcquiLite A7801. The EnertraxDL client supports communications via HTTP and can use either LAN or Dialup communications with the DAS.

EnertraxDL requires Microsoft Windows 98, 2000 or XP on your workstation.

AcquiSuite firmware v01.04.0618 or later is required for use with this software.

AcquiLite A7801 firmware v0.04.0812 or later is required for use with this software.

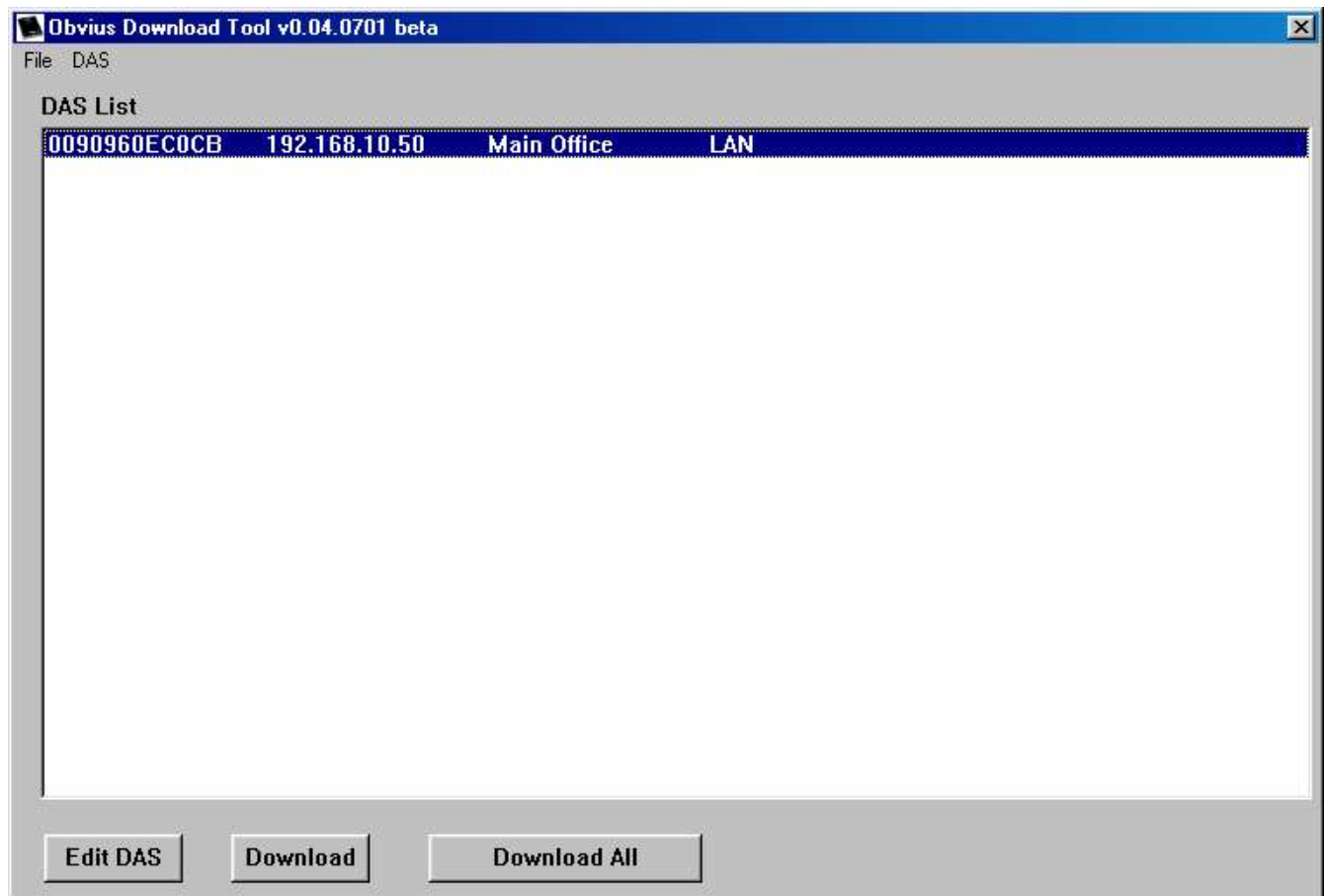
Installation

Place the EnertraxDL.exe file in a directory on your windows hard drive. C:\ENERTRAX\ is a good location. When the program is run, the log file data will be stored in this subdirectory.

No further action is required. EnertraxDL does not modify any registry keys or windows ini files. For ease of use, you should create a shortcut on your desktop to this program.

Software Operation

Once the software has been installed in [C:\ENERTRAX](#) you can run the program by double clicking the Enertxdl.exe icon. The software will display a main window with a DAS list, buttons and several menu options..



The EnertraxDL version number is listed in the title bar of this window.

When the software is run for the first time, the DAS list will be blank.

DAS List Overview

The main window contains a list of DAS units. Some details about each DAS unit are listed.

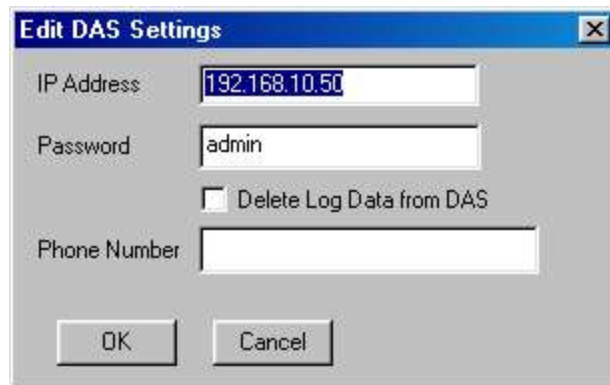
- **Serial Number:** A unique serial number of the DAS.
- **IP Address:** The IP address of the DAS. Note: for dialup connections, the ip address is that of the PPP dialup session. (192.168.238.1).
- **Name:** The user assigned name of the DAS unit.
- **LAN:** Reports that this DAS is on a LAN/WAN connection and does not require a modem connection.
- **Phone Number:** The dialup phone number of the DAS. (optional, mutually exclusive with LAN connections.)

Several options are present on the main page: These options are as follows:

- **DAS Menu, Add:** Add a new entry to the list. This option will prompt for the DAS details with the same screen as the “Edit DAS” dialog.
- **DAS Menu, Delete:** This menu option will remove the currently selected DAS unit from the list.
- **Edit DAS button:** This button will display a dialog box with the current settings for communication with the DAS.
- **Download button:** Click this button to download data from the currently selected DAS unit.
- **Download All button:** Click this button to download data from all listed DAS units.

Edit DAS Settings:

The Edit DAS dialog box provides the basic communications options for a specific DAS.



The dialog has several options:

- **IP Address:** This is the address of the DAS that you wish to communicate with. The Ethernet (LAN) IP address is displayed on the LCD of the DAS while it is operating.

If you wish to call the DAS with a modem, you must use the IP address in the DAS configuration page under “Networking, Dialin Setup”. The default IP address is 192.168.238.1

- **Password:** This is used with the “admin” account on the DAS. EnertraxDL will use the admin account to access the DAS when downloading data.
- **Delete Log data from DAS:** Check this to remove the log data from the DAS after the download is complete. Removing old data will make subsequent downloads faster. If the data is not deleted, it will be downloaded again on the next session, however it will be discarded when duplicate log entries are removed from the log files on the local hard disk.
- **Phone Number:** This optional parameter is the phone number to dial when calling a DAS. If LAN/Ethernet access is required, leave the phone number field blank. The EnertraxDL software does not use dialing rules, so the complete dial string should be provided in this field. I.e., 9 for an outside line, a comma to pause, the full 10 digit phone number, etc.

When the options are configured, click ok to save the changes.

Downloading Data

Modem issues

The EnertraxDL software uses a standard windows dialup connection, and uses the default modem for dialing purposes.

To test a connection manually, use the windows dialup connection icon in your “dialup networking” settings folder (98/me) or under “Network connections” (XP). To set up a connection icon in windows, follow the instructions in the AcquiSuite or AcquiLite manuals in the chapter on modem communications/dial in.

The present release of EnertraxDL does not support multiple modems on a single computer system.

Automating Downloads

EnertraxDL can be run in automatic mode. This will allow you to download log data from all configured DAS units without user input. To run in automatic mode, use the command line option “/AUTO”. This will have the same effect as the “download all” button. When complete, EnertraxDL will exit automatically.

To download data at a specific time on a daily or weekly basis, use the windows scheduler in Win98 or XP. When specifying the program to run, add the “/AUTO” command line option after the program name to allow EnertraxDL to operate automatically.

Configuration Files

EnertraxDL Configuration Files

EnertraxDL stores configuration information in “daslist.txt” located in the enertraxdl.exe subdirectory. The contents of this file are in comma separated text format. The phone number column allows quotation marks around the column content. All other columns do not allow quotations, and the contents of these columns may not contain a comma.

Each line of this file contains the following: `serialnumber,name,phone,ipaddress,deletelog,password`

- **SerialNumber:** The serial number of the DAS unit. This value is obtained automatically from the DAS.
- **Name:** The user specified name of the DAS unit. This value is obtained automatically from the DAS.
- **Phone:** (optional) The phone number to call when using a modem to communicate with the DAS. Note: this parameter is quoted in the configuration file. This allows the user to enter a phone number with a comma in the middle.
- **Ipaddress:** The IP address of the DAS. For LAN communications, this is the ethernet IP address shown on the LCD console of the DAS. For modem connections, this must be the IP address that is configured in the DAS for dial-in service.
- **deletelog:** This parameter may be “YES” or “NO”. If set to yes, the DAS will be instructed to purge old log data after the download is complete.
- **password:** The admin password for access to the DAS.

The EnertraxDL software also maintains a log file of activity “errorlog.txt” located in the enertraxdl.exe subdirectory. This is helpful when looking for download problems.

Each line of this file contains the following: `time,file,line,message`

- **time:** the timestamp of the log entry. This timestamp is in local time of the computer running EnertraxDL.
- **File:** the source code file where the
- **line:** the specific line in the source code where the message is generated. This is helpful in locating the specific item in the source code that causes the error or alarm.
- **message:** The text message that indicates the error or alarm.

The error log.txt file may be deleted to clean up space. The file will be created automatically the next time EnertraxDL is run. The log file is continuously appended with new log information each time EnertraxDL is run.

DAS Configuration Files

DAS Configuration Files are downloaded along with the data log files from the AcquiSuite or AcquiLite. These ini files are placed in the subdirectory (by DAS serial number) along with the log data files.

The mb-xxx.ini files are specific configuration files related to the modbus device (or point inputs on the A7801). Each file contains point names, low and high alarm levels, units of measure, and other configuration options.

The file “loggerconfig.ini” contains system settings for the DAS including upload information, log interval and similar parameters.

The configuration files are provided for informational purposes only. Changing the configuration files on the workstation will not update the configuration of the DAS.

EnertraxDL Source Code

The source code for the EnertraxDL software is provided under a BSD style license at no charge. The software and source code is available at <http://www.obvius.com/enertrax/>

The source code is written in C, and is compiled with the OpenWatcom v1.2 compiler. OpenWatcom is available for free or with donation at <http://www.openwatcom.org/>.